

Eastern Atlantic Oceanic Crust Project

Source Rock Occurrence & Maturity in the West African 'Distal Domain'



An exploration research study by **Subsurface Resource Consulting** and **IGI Ltd.** investigating the stratigraphic development, geochemistry, thermal and maturity history of source rocks as a guide to future exploration of the deep water basins overlying oceanic crust.

Biostratigraphy

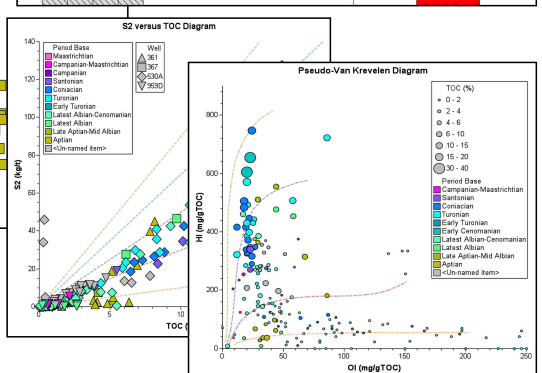
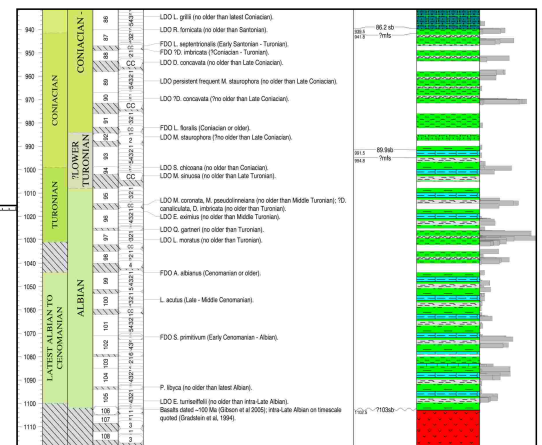
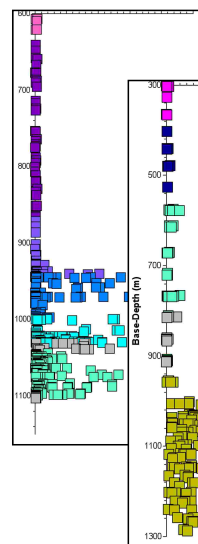
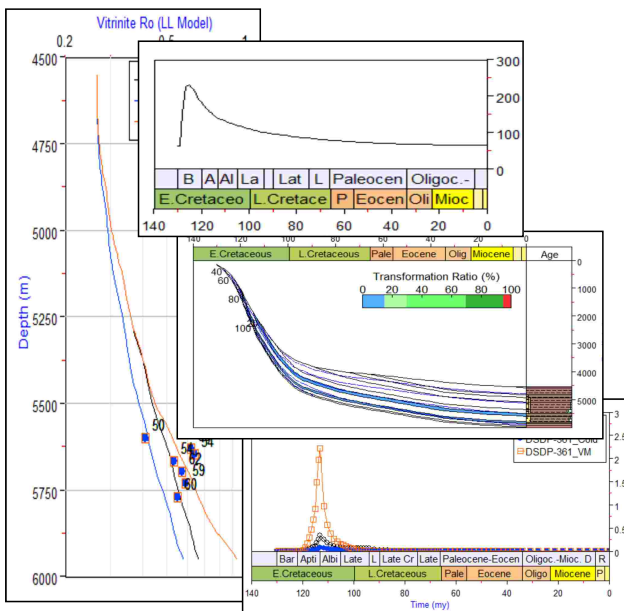
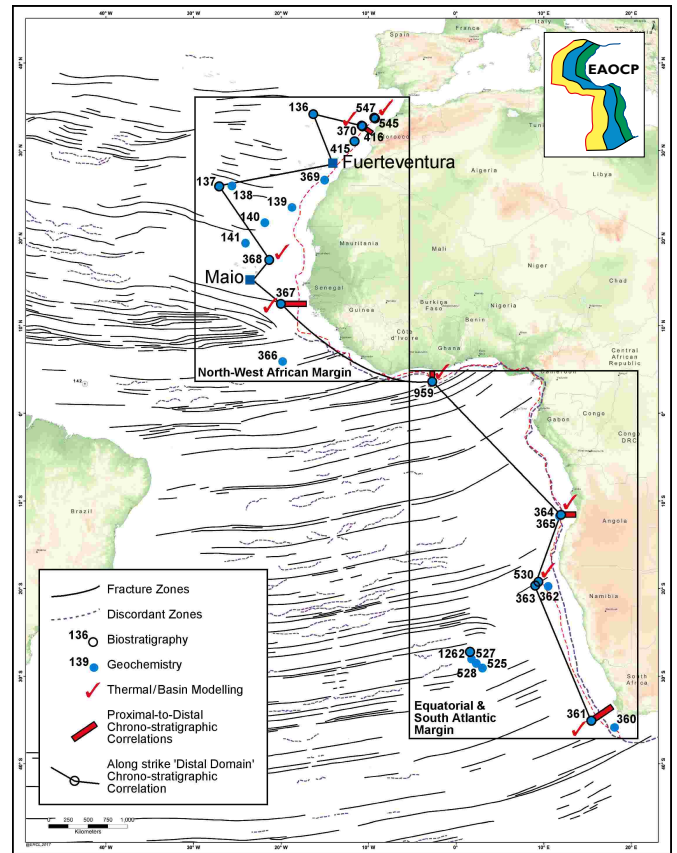
- New evaluation of biostratigraphic data from 15 DSDP/ODP sites
- Improved resolution and age revision displayed on biostratigraphic charts
- Proximal-to-distal and along-strike distal domain chronostratigraphic diagrams
- Identification of Oceanic Anoxic Events (OAE's) and stratigraphic setting of organic-rich intervals (ORI's)
- Documented database, methods and results with full up-to-date bibliography

Organic Geochemistry

- Comprehensive geochemical database in p:IGI or Excel for 51 DSDP/ODP boreholes, applying new stratigraphy
- Identification, characterisation and assessment of source rock potential displayed in multiple p:IGI plots

Thermal History/Basin Modelling

- Review of heat flow and crustal structure/lithospheric thickness along the West African Margin
- Investigation of anomalous heat flow on oceanic crust and background to current state of research
- Iterative 1D Basin Modelling at 8 DSDP sites and assessment of potential for oil generation



Available Now as two Non-exclusive Reports:

- Northern Sector - North West African Margin - Price £40,000
- Southern Sector - Equatorial & South Atlantic - Price £40,000
- Both Sectors together - Price £60,000

For full project description visit: <https://www.igild.com/data/africa/eastern-atlantic-oceanic-crust-project>

Contact SRC on +44 (0)203 9296860 or email Richard.Bray@subresconsult.com